

May  
2023



# Beyond the Wire

Central Valley Electric Cooperative, Inc.



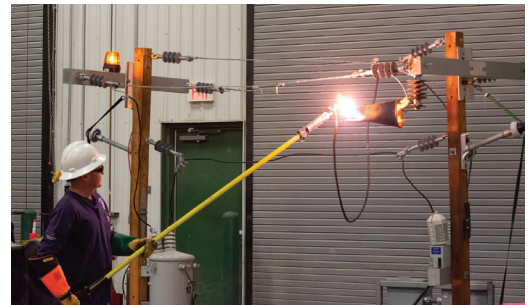
## May is National Electrical Safety Month

May is National Electrical Safety Month, and at Central Valley Electric Cooperative, safety is our top priority for our employees as well as our members. To promote safety education in our communities, we offer free electrical safety demonstrations to students, organizations, and businesses.

We also provide electrical safety information in the *Enchantment* magazine, the monthly newsletter, our website, our lobby, and social media.

CVE encourages the public to contact us if they see a downed power line or any other dangerous electrical situation. We strive to provide our communities with safe, reliable, and affordable electricity.

If you are interested in a free electrical safety demonstration, call Raelynn Bean or Kyler Bowerman at 575-746-3571.



## CENTRAL VALLEY ELECTRIC CO-OP PHOTO CONTEST

THEME:  
HOMETOWN PRIDE

**BULLDOG BOWL**

**ENTRIES DUE:  
MAY 31, BY 5PM**

**CONTEST RULES**

- Photos must be taken in local communities
- Entrants must be CVE Members
- Multiple entries allowed

**INFORMATION REQUIRED**  
Full Name, Mailing Address,  
Phone Number

**EMAIL SUBMISSIONS TO:**  
[mbrsvc@cvecoop.org](mailto:mbrsvc@cvecoop.org)

**PRIZE  
\$50**

**QUESTIONS? CALL 575-746-3571**

CVE reserves print and web rights for the winning photo.

# Plant the Right Tree in the Right Place

Trees beautify our neighborhoods, and when planted in the right spot, can even help lower energy bills. But the wrong tree in the wrong place can be a hazard — especially to power lines.

## LARGE TREES

Height/spread of more than 40 feet, such as:

- Maple
- Birch
- Oak
- Sweetgum
- Spruce
- Linden
- Pine

## MEDIUM TREES

Height/spread of 25 to 40 feet, such as:

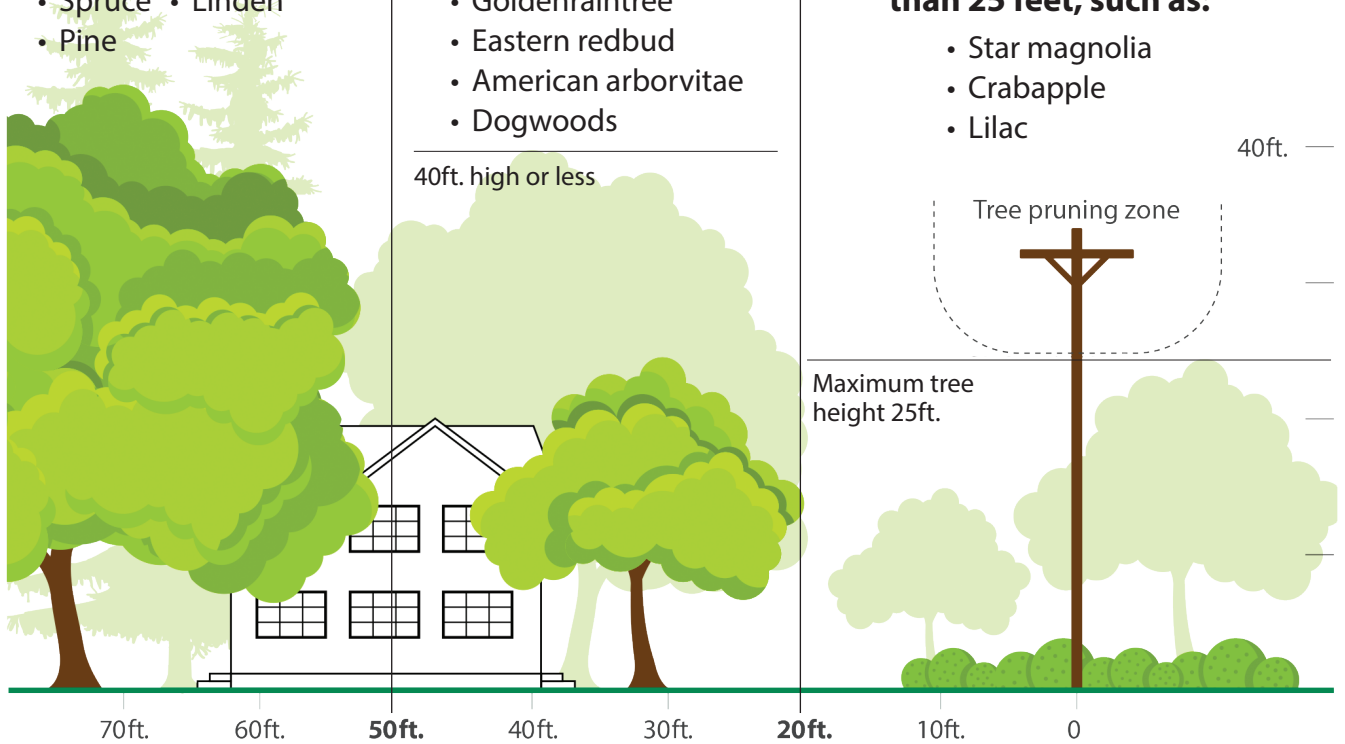
- Washington hawthorne
- Goldenrain tree
- Eastern redbud
- American arborvitae
- Dogwoods

## SMALL TREES

Avoid planting within 20 feet of power lines. When planting within 20 feet is unavoidable, use only shrubs and small trees.

Height/spread of no more than 25 feet, such as:

- Star magnolia
- Crabapple
- Lilac



### Central Valley Electric Cooperative, Inc.

PO Box 230 • 1403 N. 13th St. • Artesia, NM 88211  
(575) 746-3571 • (575) 752-3366 Hagerman  
(575) 746-4219 fax • [www.CVECOOP.org](http://www.CVECOOP.org)

Office Hours: 8:00 a.m. to 5:00 p.m. (Monday - Friday)