

May
2024



Beyond the Wire

Central Valley Electric Cooperative, Inc.



Central Valley Electric
Cooperative, Inc.



1st Annual CVE *Lineman Camp*

May 30

9:00 am - 12:00 pm

LIGHT UP YOUR LIFE

- Hands on activities
- Top hand award & giveaways
- Lunch in with crews

Age Group:

16-19

**Registration
Deadline: May 20**

**Register
Online**



For more information visit www.cvcoop.org/lineman-camp,
or call Kyler at 575-746-3571

Davis Wins Safety Award

Central Valley Electric Cooperative would like to congratulate Luke Davis for being recognized by his peers with the Long Rope Safety Award. Davis is a Serviceman in the oilfield. He has worked for the co-op for over 15 years.

His peers describe him as dependable and willing to help his fellow coworkers on or off the clock. A colleague stated, "Luke always thinks of safety first and is a great leader. He has a positive attitude and is willing to keep learning and improving. Luke stands up for what he believes in, is mentally strong, and always thinks things through. He is a true leader."

The Long Rope Safety Award is dedicated to all linemen in New Mexico who have been killed or injured on the job. It is given to an individual with a positive attitude towards training, communication, and safe work habits who demonstrate a culture of safety in a challenging industry

The employees, management, and board of trustees at CVE would like to congratulate and thank Luke Davis for being a leader in safety.



SIGNS OF AN

ENERGY SCAM

High-Pressure Tactics

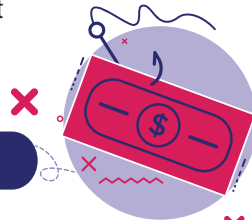
Scammers will pressure you, creating a sense of urgency. Claims that your power will be disconnected without immediate payment are common with utility scams.

Sketchy Payment Methods

Scammers may ask for unusual payment methods like gift cards or cryptocurrency. In these cases, it's likely a scam.

Dodgy Communication

Whether an email, text or letter, utility scams typically include poor grammar, spelling errors or unusual email addresses. These are common warning signs of a scam.



The CVE office will be
CLOSED Monday, May 27
for Memorial Day.

reminder:

ENTRIES DUE:
MAY 31, BY 5PM

CVE
PHOTO CONTEST

Central Valley Electric Cooperative, Inc.

PO Box 230 • 1403 N. 13th St. • Artesia, NM 88211
(575) 746-3571 • (575) 752-3366 Hagerman
(575) 746-4219 fax • www.CVECOOP.org

Office Hours: 8:00 a.m. to 5:00 p.m. (Monday - Friday)